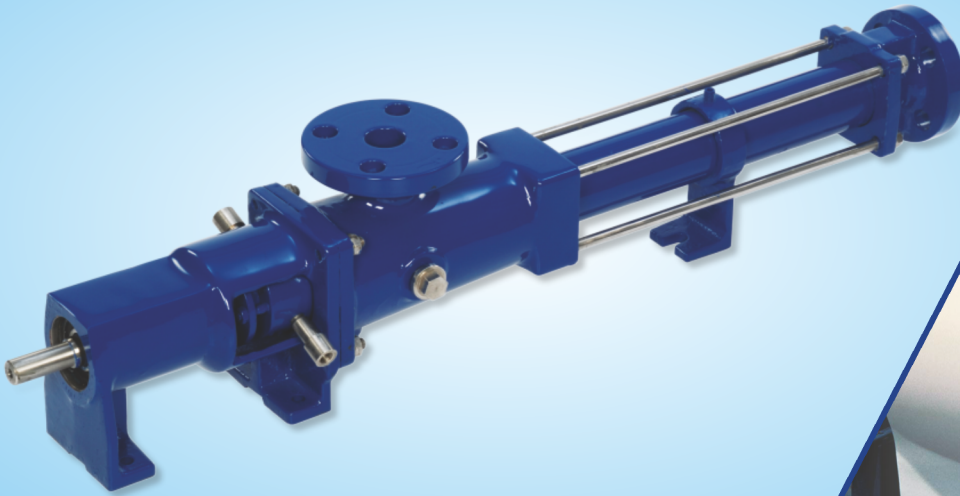




HYDRO PROKAV PUMPS (INDIA) PRIVATE LIMITED



Manufacturers & Exporters of All Types of Progressive Cavity Pumps, Lobe Pumps & Screw Pumps.



KYM - KH Seies Helical Rotor Pumps

APPLICATIONS

For Transfer of Gritty Mine water, Cement & Clay Slurries, Viscous oil, Cellulose, Viscous Paper Pulp, Ceramic & Abrasive slurries, Phosphoric Acid Slurries, Sludge, Industrial Waste, Dyes Stuff & Detergent, Paint, Starch, Acid & Alkalis, Chemical Solution, Handling of High or Low Viscous, Neutral or Aggressive Media, with or without Solid or Fibrous Matter.

BASIC DESIGN, PRINCIPLE OF OPERATION

HYDRO PROKAV Progressive Cavity Pumps are Self Priming, Rotary, Valve less Positive Displacement Pumps having two pumping elements Rubber Stator and Metallic Rotor. Stator is having helical profile with pitch double to Rotor pitch resulting in cavities, which gently carry the liquid.

KH pumps are basic design pumps with flange connection usually installed horizontally. Inlet and outlet ports can be interchanged by changing direction of rotation of motor. Pumps are suitable for drive by motor/Engine thro Direct Coupling or V Belt and Pulley.

In the cross-section stator and rotor contact each other at two points forming lines of contact or "sealing". When the rotors turns, this geometry resolves into tandem chamber which are self-contained as also when pumps are stationary.

Because of Elastomer stator, KH pumps are not suitable for dry running.

APPLICATIONS

Agriculture, Building Industry, Chemical Industry, Ship Building, Color & Vanish Factories, Filler Presses, Fish Processing Plant, Oil Mills & Starch Factories, Paper & Pulp industry, Petrochemical Industry, Pharmaceutical Industry, Plastic Industry, Refineries, Sewage & Effluent Treatment Plants, Soap & Fats Industry, Sugar Refineries, Food & Food Processing Plants, Water Treatment Plants.

MATERIAL OF CONSTRUCTION

Pumps are manufactured in different materials of construction depending on the liquid to be handled. All parts coming in contact with liquid are selected to ensure Compatibility.

Wetted castings are available in cast iron, stainless steel, and carbon steel. Rotors are available in stainless steel, carbon steel hard chrome plated or nitride steel. Stators are available in all types of elastomer material. Option of using sealing material, as gland packing or mechanical seal is available.

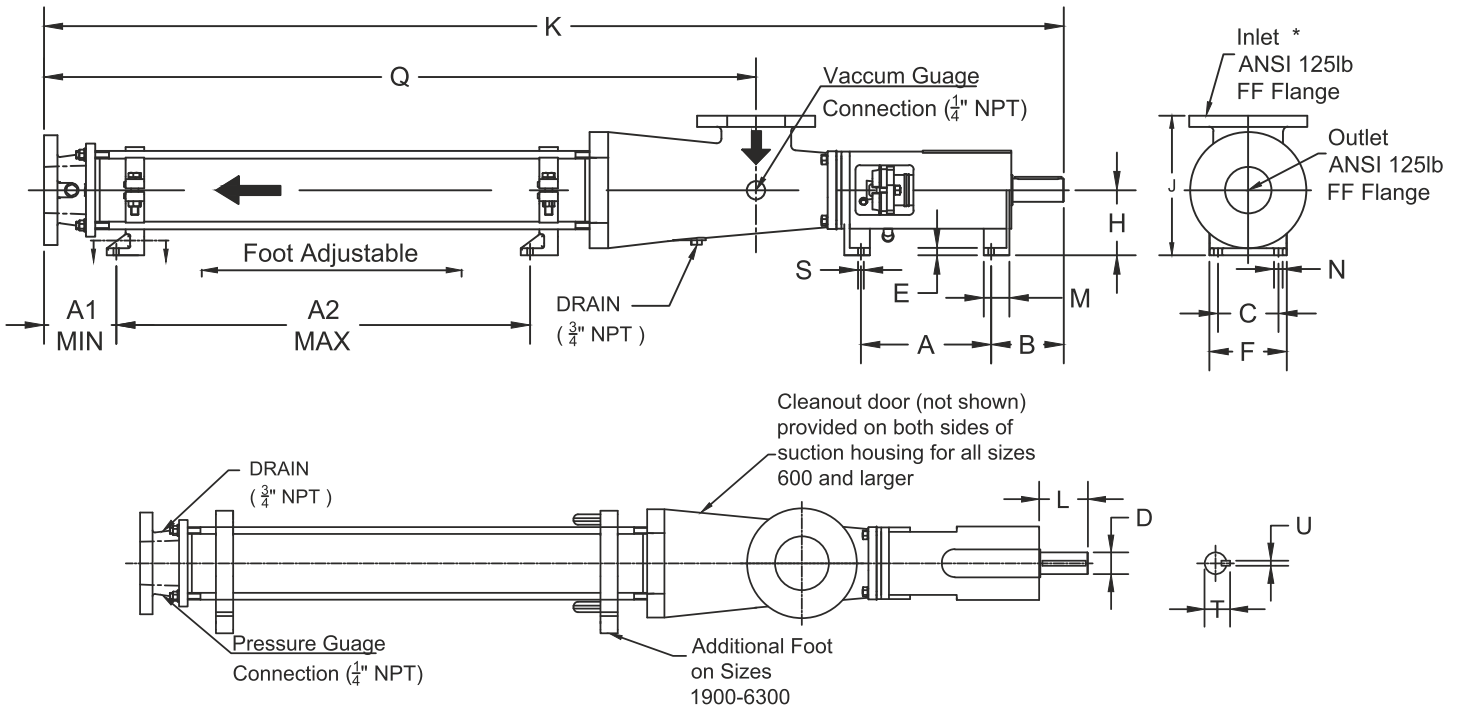
HYDRO PROKAV pumps are having two special designs of carbon joints completely sealed against liquid.

SPECIAL FEATURES / ADVANTAGES

Longer pitch are smaller diameter of rotor makes HYDRO PROKAV pumps highly reliable with less Initial starting Torque, Higher Mechanical Efficiency, Capability to handle large proportions of Solids, Small Radial Thrust, Low Rubbing Velocity, Less Wear, Lower Axial Thrust, Smaller Unbalance, Higher Suction Lift.

Dimensional Data Drawing for KH Type Pumps

Type K*H



PUMP SIZE	L	L1	H	H1	A	B	C	C1	D (mm)	E	F (mm)	G (mm)	DL	Suction Flange	Discharge Flange	Weight (Pounds)
K*H-164	28.81	18.15	3.15	6.46	2.20	4.92	2.48	-	16	1.57	5	18	11.02	1	3/4	30.86
K*H-236	36.22	22.64	3.54	7.09	2.76	6.10	3.07	3.15	25	1.97	8	27.9	15.75	2	1 1/2	52.91
K1H, K2H-375	45.20	30.24	3.54	8.19	2.76	6.10	3.07	3.54	25	1.97	8	27.9	21.26	2 1/2	2	77.16
K4H-375.1	45.20	30.24	3.54	8.09	2.76	6.10	3.07	3.54	25	1.97	8	27.9	21.26	2 1/2	2	77.16
K1H-600	49.29	34.13	3.54	8.09	2.76	6.10	3.07	4.33	25	1.97	8	27.9	24.41	3	2 1/2	99.2
K2H, K4H-600.1	49.29	34.13	3.54	8.09	2.76	6.10	3.07	4.33	25	1.97	8	27.9	24.41	3	2 1/2	99.2
K1H-1024	51.61	36.46	3.54	8.09	2.76	6.10	3.07	4.33	25	1.97	8	27.9	26.38	3	2 1/2	116.85
K2H-1024.1	51.61	36.46	3.54	8.09	2.76	6.10	3.07	4.33	25	1.97	8	27.9	26.38	3	2 1/2	116.85
K4H-1024	61.97	36.46	4.41	11.02	3.74	9.10	4.57	4.33	40	3.15	12	43.1	26.38	3	2 1/2	163.14
K*H-1500	73.03	51.77	4.41	10.43	3.74	9.10	4.57	5.31	40	3.15	12	43.1	37.00	5	4	224.87
K*H-1900	86.34	60.43	5.51	11.81	5.12	11.02	6.10	5.31	50	4.33	14	53.5	42.91	5	4	370.38
K1H, K2H-2650	91.93	64.84	5.51	12.60	5.12	11.02	6.10	4.52	50	4.33	14	53.5	45.28	6	5	537.93
K4H-2650	106.9 3	75.11	7.09	14.96	5.91	12.99	6.89	7.68	60	4.72	18	64.2	45.28	8	6	813.51
K1H, K2H-4500	113.2 3	81.42	7.09	14.96	5.91	12.99	6.89	7.28	60	4.72	18	64.2	51.97	8	6	987.67
K1H, K2H-6300	131.6 5	92.17	9.84	19.69	9.45	15.74	10.16	7.28	80	6.69	22	85	59.06	8	8	1,578.51



HYDRO PROKAV PUMPS (INDIA) PVT. LTD.,

S.F. No. 170/2, 170/3, Private Industrial Estate, SIDCO,
Coimbatore - 641 021. Tamil Nadu. INDIA

Phone : +91-422-4301900, E-mail : sgiri@hppumps.com

URL : www.hppumps.com